

HiePRO SOLICITATION B25000415 Goulds Pumps
 Natural Energy Laboratory of Hawaii Authority.

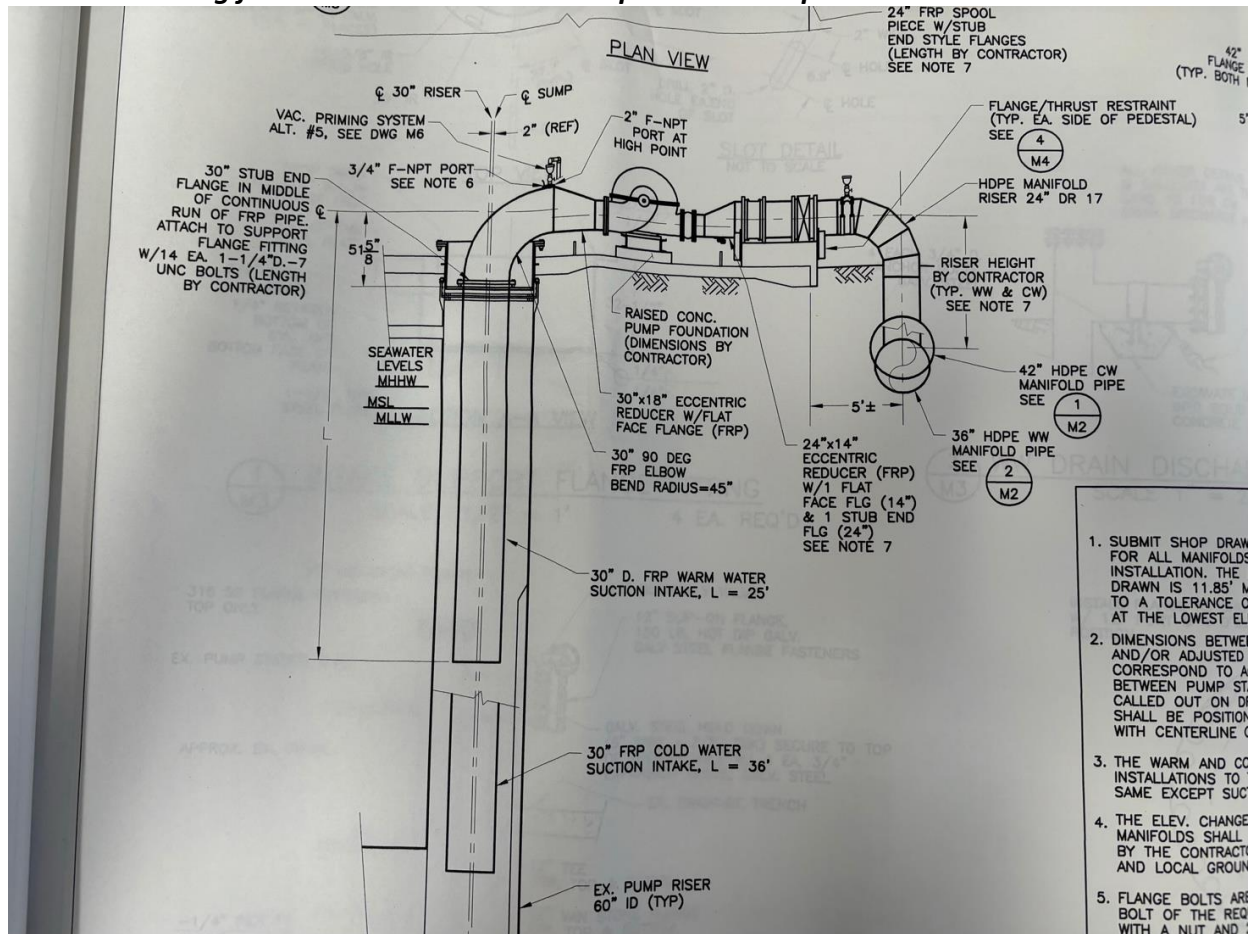
QUESTION 1:

Are there any drawings for the existing pumps to know what to provide in the quote, per specification? "Any pumps offered that are not an exact match will need to include in the bid price all piping, hardware adapters, and fittings modification to allow the pumps to work within the framework of the current pump station design."

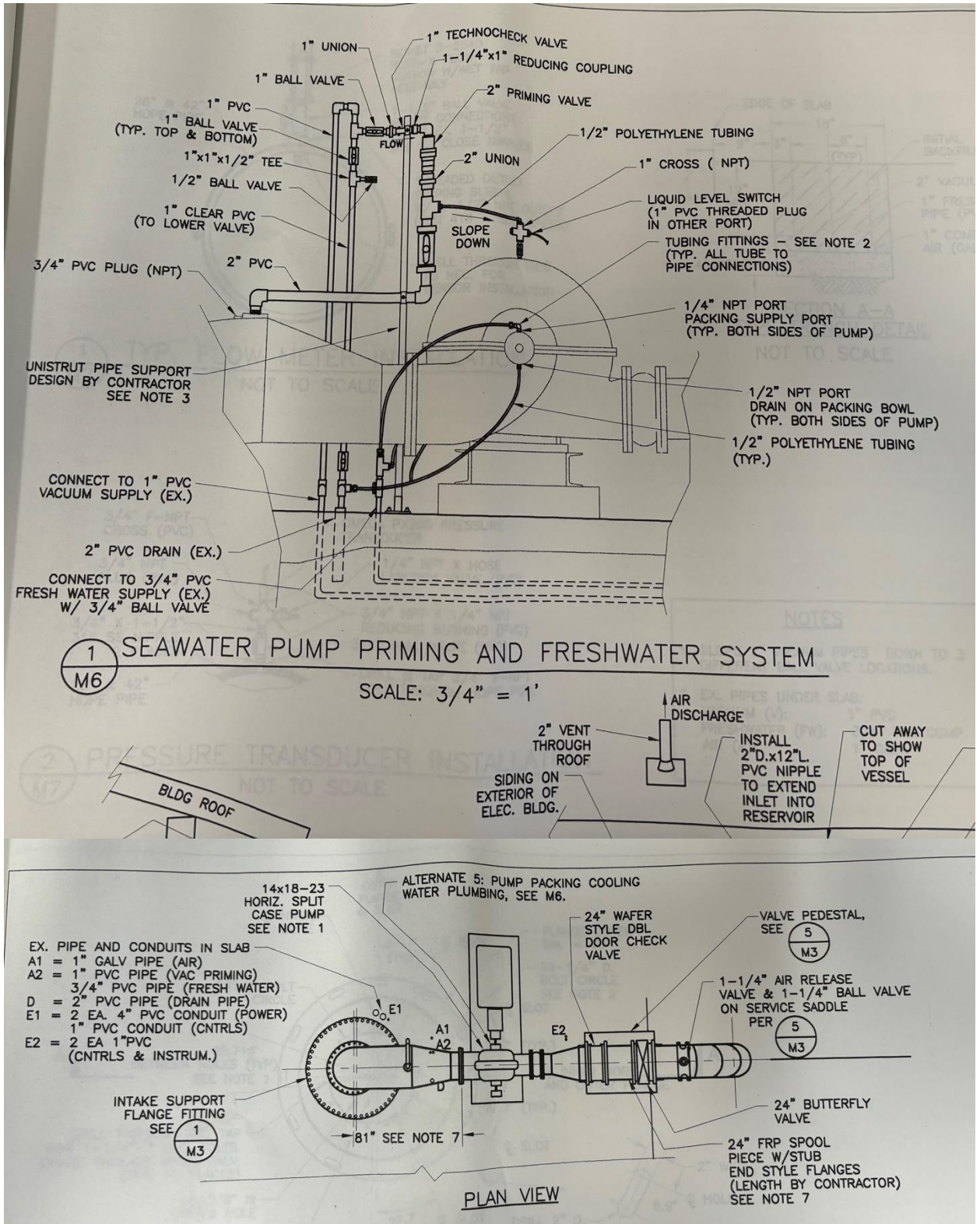
ANSWER 1:

Dimensional drawings are non-existent in our plan sets. The plan set does provide general configuration information of the complete pump package, pump, motor, baseplate and coupling for the 3409L 18x14x23, 3410M 6x8-11 and 3419M 8x10-12 pumps. Goulds Pump provides dimensional diagrams of the complete pump package that was included in the specification document in the HiePRO Solicitation. This information can provide guidance in assessing the necessary additional parts needed to insert a pump not dimensionally similar to the existing Goulds Pumps, including the ancillary equipment and connections (vacuum pump and packing water connections) necessary to be utilized in our current system.

Plan set drawing for the 3409L 18x14x23 200hp Goulds Pump:

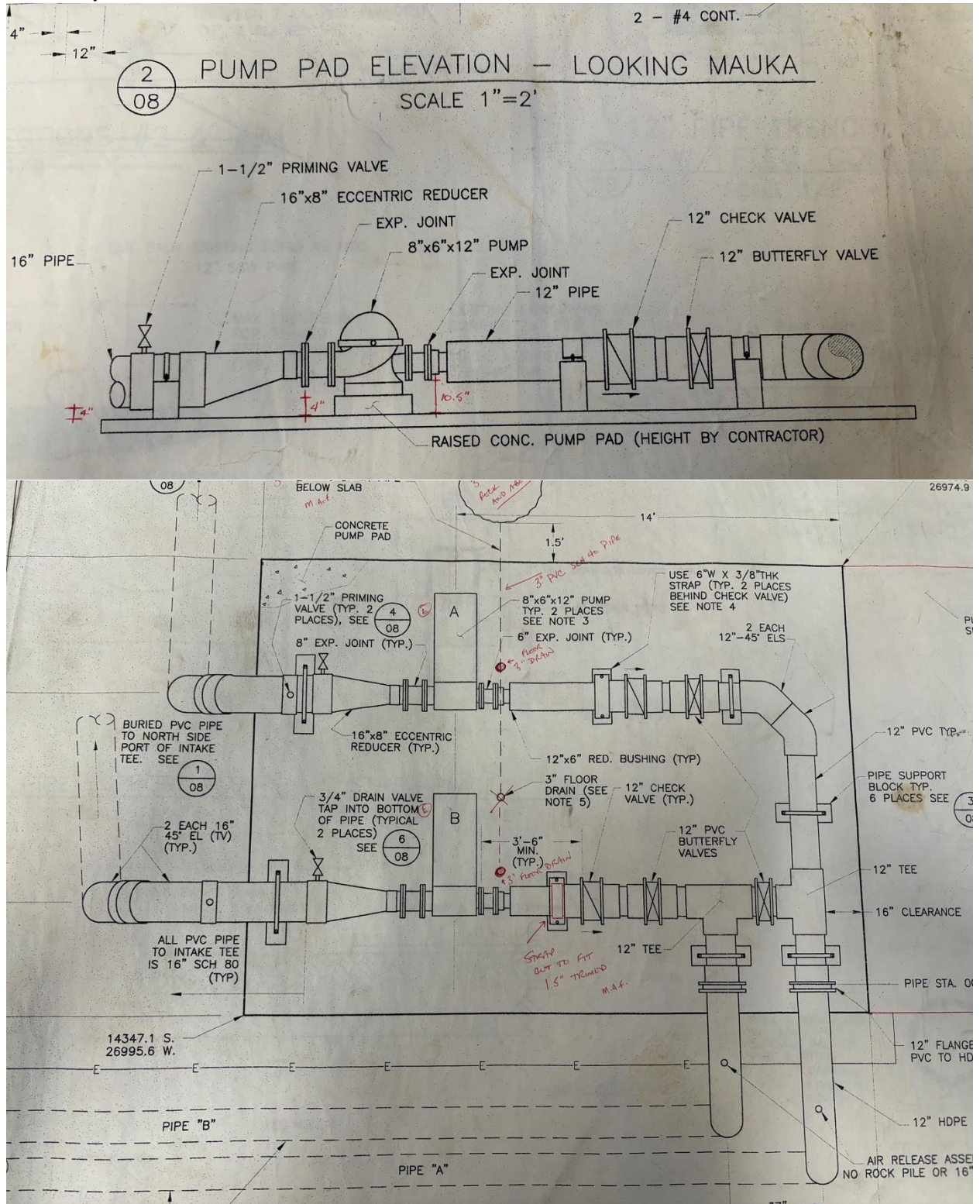


HiEPRO SOLICITATION B25000415 Goulds Pumps
 Natural Energy Laboratory of Hawaii Authority.



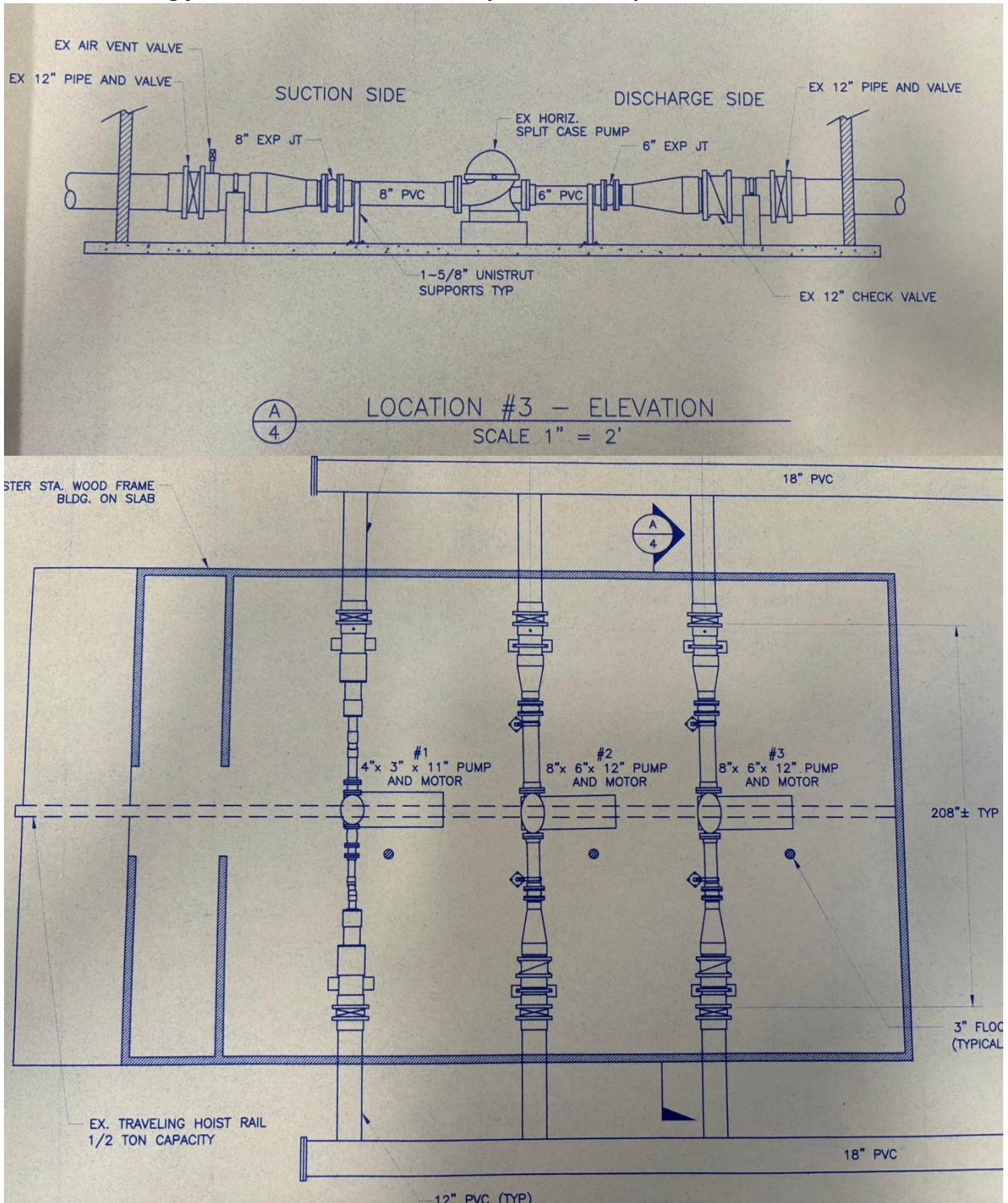
HiePRO SOLICITATION B25000415 Goulds Pumps
 Natural Energy Laboratory of Hawaii Authority.

Plan set drawing for the 3410M 6x8-11 40hp Goulds Pump (Note: NELHA swaped the 3410M 6x8-11 pumps in the slots where the 3410M 6x8-14H pumps originally were installed):



HiEPRO SOLICITATION B25000415 Goulds Pumps
Natural Energy Laboratory of Hawaii Authority.

Plan set drawing for the 3410M 8x10-12 100hp Goulds Pump:



HiEPRO SOLICITATION B25000415 Goulds Pumps
Natural Energy Laboratory of Hawaii Authority.

QUESTION #2:

A 12LR-25A pump selection that comes up that would be 900rpm 200hp but I get a “near miss” warning against the shaft strength of the pump for this service condition. I have an alternate pump with the spec of 1785 rpm and 250HP instead of the what the spec calls for; 900 rpm and 200HP.

What are the service conditions? Salt water. Anything more?

The service conditions for the Goulds Pump 3409L 18x14x23 200hp are as follows:

Fluid: Seawater

NPSHR: 9.6 ft (this is critical as we are lifting the seawater from the sump)